

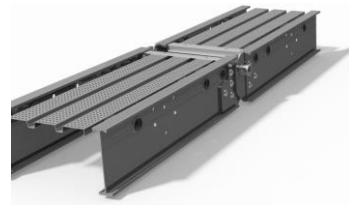
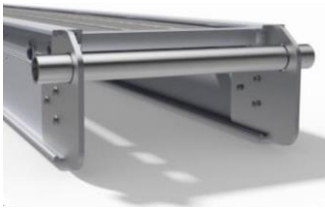
# CONNECTABLE - STAGE PLANK

## 2-PERSON

**500 lbs.**  
\*load capacity, user plus tools.

**FEATURES**

- Safety grade aluminum surface is especially effective in slippery or muddy conditions.
- Metal End Caps provide a smooth-continuous walkway
- Easy Grip Rungs on each end which provide wide, easy to grip handles for pulling or carrying stage planks.
- Slip resistant decking
- Optional Guardrail System Available



MODEL	WIDTH	LENGTH	WEIGHT (Lbs)	SHIPPING DIMENSIONS (H X W X L)
CSP1212	12"	12'	41	4" X 12" X 12'
CSP1216	12"	16'	60	5" X 12" X 16'
CSP1220	12"	20'	97	6" X 12" X 20'
CSP1224	12"	24'	112	6" X 12" X 24'
CSP2012	20"	12'	52	4" X 20" X 12'
CSP2016	20"	16'	69	5" X 20" X 16'
CSP2020	20"	20'	115	6" X 20" X 20'
CSP2024	20"	24'	133	6" X 20" X 24'